

Angle Adapters

Angle Adapters

UL LISTED

E/Z-200 4 jaw applications

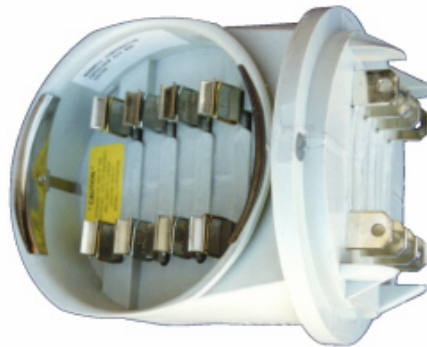
E/Z-500 5 & 6 jaw applications

E/Z-800 7 & 8 jaw applications

E/Z-200



E/Z-800



E/Z-500



- Patented, Mighty-Bite jaw design.
- Fits ring and ringless meter sockets.
- Fits self contained or transformer rated.
- Grounding system standard on all models.
- 70 degree viewing angle.
- May be installed LEFT or RIGHT
- UL Listed, proprietary blend, fiberglass reinforced polycarbonate housing.
- 4 jaw model is **UL LISTED**.

<u>MODEL</u>	<u>Jaws</u>	<u>Amp Max. - Cont.</u>	<u>Meter Form</u>	<u>UL LISTED</u>
E/Z 200	4	200A - 175A	2S	YES
E/Z 500	6	200A - 175A	3,4,12S	-
E/Z 800	8	200A - 175A	5, 14, 15, & 16S	-

- NOTE: Adapter is reversible for LEFT or RIGHT viewing
- ADDERS: Dead front option “-DF”
- APPLICATION Typically used to allow meter reading from a side yard.
- PACKAGE Shipped in packages of four

World's leading manufacturer of UL Listed meter socket adapters



MARWELL CORPORATION



PO BOX 139 * MENTONE, CA 92359 * 909-794-4192 * FAX 909-794-0250