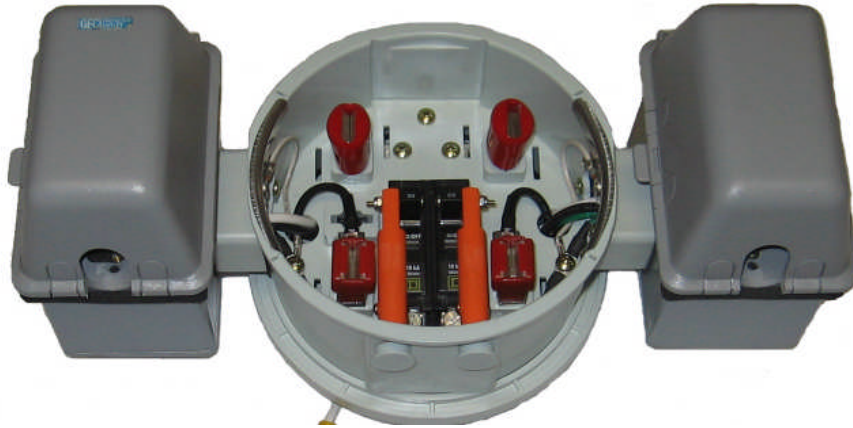


MARWELL NEWS July 2006

Temporary Load Center



Introduced to the industry and patented (#D243-699) by its developer in the mid seventies, this piggyback method of providing power to construction sites and flooded homes has been promoted and endorsed by major Utilities for decades. Marwell's version of the Temporary Load Center is a UL Listed product with all components UL Recognized. The TLC is rated for up to 30 amps per phase. The TLC has provisions to make it possible to be installed on both ring and ring less style meter enclosures. The TLC is the only Temporary Power unit available that is entirely non-metallic and is constructed of our durable polycarbonate. The following configurations are available:

1000-TLC-SP-7000 Two duplex GFI Receptacles rated at 20 amps and 120 volts

1000-TLC_SP-7020 One duplex GFI Receptacle rated at 20 amps and 120 volts
One duplex Receptacle rated at 30 amps and 250 volts

1000-TLC-SP-7030 One duplex GFI Receptacle rated at 20 amps 120volts
One TT30R Receptacle rated at 30 amps and 120

Change prefix from 1000 to1800 for ringless

Same configurations available for ringless

UL LISTED



World's leading manufacturer of UL Listed meter socket adapters

MARWELL CORPORATION

PO BOX 139 * Mentone, CA 92359 * 909-794-4192 * FAX 909-794-0250

